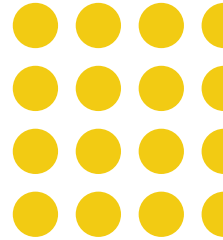


**WE  
GOT  
YOU**





## **WE GOT YOU.**

We design our innovative products and smart services with one goal in mind; to safeguard and support you at home, on roads and in life.

From protecting your loved ones, running your business smoothly, or tracking and taking care of your car, you can always trust Tracker to make your life a little easier and a lot more stress-free.



# Tracker Care



## **TRACKER CARE** - Always by your side

Tracker Care is so personalised, it's inspired by the care you take in looking after yourself and your loved ones.

The Tracker Connect Mobile App has a convenient assist button that can be quickly activated in a roadside or medical emergency. You can easily share your journey with family and friends.

Tracker Care's benefits include Zones Management and an In-App Car Guard with an optional auto-arm feature, that notifies you if your vehicle moves from its digitally-locked position. You will always know that your vehicle and the people in it are safe and sound. In addition, impact detection technology alerts us of a severe accident. Even if you are unable to respond to us yourself, help can still be dispatched to you and your loved ones.

Tracker Care is suitable for all vehicles and is recognised by motor manufacturers and major insurers.



Location-Based Tracking



Trip Logbook



Licence Reminders



Log Vehicle Expenses



App and Web Access



Lifetime Warranty



Theft Retrieval



In-App Car Guard



Standard Risk Notifications



Reports



Zones Management



Share My Journey



Service Reminders



Roadside and Medical Assistance



Impact Detection

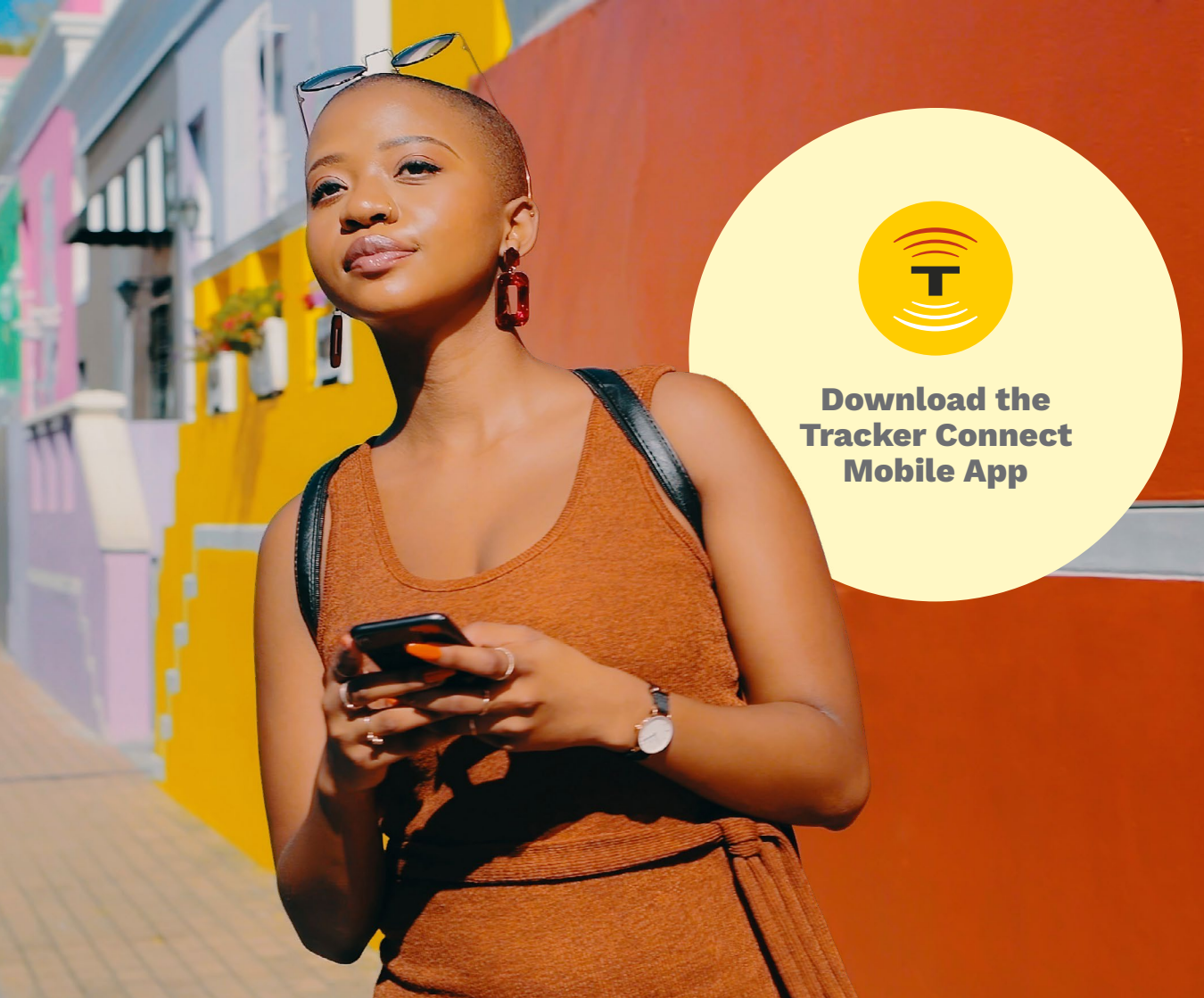


Accident Assistance



**Find the  
Tracker  
that works  
for you.**

	CarePulse	Care	Protect	Recover	Response	Motorcycle Protect
	Tracker CarePulse ensures you're always cared for and protected. Whether on the road with roadside and medical assistance, or at home with our app's panic button. We got you!	Tracker Care is always by your side, protecting you, your car and your loved ones in roadside and medical emergencies at the push of a button.	Tracker Protect is always in control, giving you the ability to track and monitor your vehicle, supported by our rapid-response recovery and retrieval solutions.	Tracker Recover is always in the know, providing an easy-to-use and cost-effective vehicle tracking and recovery solution.	Tracker Response is always there for you. We'll be the first responder and provide you with peace of mind knowing that should you be in an accident, help is on its way.	Tracker Motorcycle Protect provides peace of mind when you are on the road, ensuring that even those on 2 wheels are cared for and protected.
Location-Based Tracking	✔	✔	✔	✔	✔	✔
Trip Logbook	✔	✔	✔	✔	✔	✔
Licence Reminders	✔	✔	✔	✔	✔	✔
Log Vehicle Expenses	✔	✔	✔	✔	✔	✔
App and Web Access	✔	✔	✔	✔	✔	✔
Lifetime Warranty	✔	✔	✔	✔	✔	✔
Theft Retrieval	✔	✔	✔	✔	✘	✔
In-App Bike Guard	✘	✘	✘	✘	✘	✔
In-App Car Guard	✔	✔	✔	✘	✘	✘
Standard Risk Notifications	✔	✔	✔	✘	✘	✔
Reports	✔	✔	✘	✘	✘	✘
Zones Management	✔	✔	✘	✘	✘	✘
Share My Journey	✔	✔	✘	✘	✘	✔
Service Reminders	✔	✔	✘	✘	✘	✔
Roadside and Medical Assistance	✔	✔	✘	✘	✘	✘
Impact Detection	✔	✔	✘	✘	✔	✔
Accident Assistance	✔	✔	✘	✘	✔	✔
24/7 Emergency Medical Assistance	✔	✘	✘	✘	✘	✘
Rapid Armed Response	✔	✘	✘	✘	✘	✘



**Download the  
Tracker Connect  
Mobile App**

**Tracker Connect  
Mobile App**

# Tracker Connect Mobile App

## **TRACKER CONNECT MOBILE APP - Staying connected means staying safe**

Our Tracker Connect Mobile App takes the protection we provide to its full potential.

All our services are linked to the app, so downloading it helps you take an active role in your care and protection at home, on roads and in life.

- Get instant access to a Trip Logbook.
- Report a stolen vehicle at the swipe of a finger.
- Monitor the safety of your vehicle from anywhere.
- Instant access for Care customers to roadside and medical emergency response.

**Download the Tracker Connect Mobile App today:**





**Service Centre (sales and general enquiries)**  
**0860 60 50 40**

**National Emergency Control Centre**  
**0800 13 23 23**

**Visit [tracker.co.za](https://www.tracker.co.za)**

