




**WE  
GOT  
YOUR  
BUSINESS**



AT HOME. ON ROADS. IN LIFE.



**Running a business can be stressful, but with Tracker it does not have to be.**

We are proud to offer a broadened range of smart products and services that are designed to take all aspects of your business to the next level.

## **Vehicle Tracking**

Know where your vehicles are, what they're doing, and that they're safe. So you can focus on running your business.

## **Driver Safety**

With everything from an assist button to a fatigue alert system to driver behaviour reports, we keep your drivers safe on the roads, and make sure they're driving safely too. Better driver behaviour can reduce accidents and maintenance costs and keep your business moving smoothly.

## **Business Optimisation**

Tailor-made fleet management solutions will optimise your business, through smarter, safer and more cost-effective operations.

## **Value Added Services**

Value Added Services add that extra layer of safety and protection, so that you are always prepared for anything.

# VEHICLE TRACKING



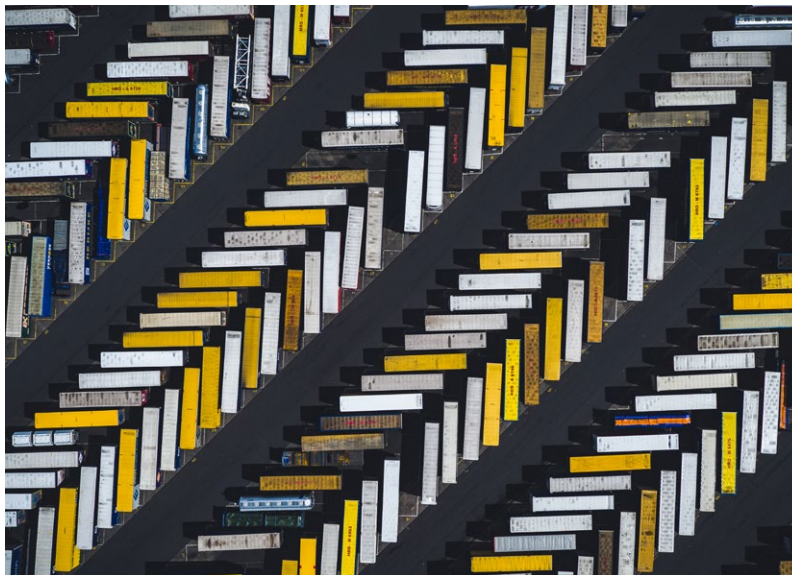
AT HOME. ON ROADS. IN LIFE.

## TRACKER EMPOWER

Our top-of-the-range business offering allows you to customise comprehensive vehicle and operational information for your business.

Tracker Empower gives you a fully customisable web-based fleet management solution to address your bespoke business requirements. The Tracker team reacts swiftly to any alerts because we receive notifications at the same time you do.

Meaningful, real-time fleet data enables dynamic, insightful business decisions. Tracker Empower gives your business a unique, innovative tool that helps ensure maximum operational efficiency, so your clients enjoy a reliable, well-managed service.



## FEATURES AND BENEFITS

Assist Button	✓
Fleet Logic Access	✓
Theft Retrieval	✓
Email/SMS Notifications	✓
Reports	✓
SMS Service	✓
Zones Management Unlimited	✓
Early Notifications	✓
Health Check Services	✓
Roaming - On Request	✓
App and Web Access	✓
Optional Impact Detection	✓
Reports Scheduling	✓
Vehicle Grouping	✓
Maintenance Scheduling	✓
Traffic Information	✓
Integration APIs	✓
Route Planning	✓
Share My Journey	✓
Optional Accessories	✓

## TRACKER CONNECT

Tracker Connect is a comprehensive fleet-tracking solution, giving the most accurate view of your fleet from anywhere and everywhere.

Using your computer or tablet, you can request monthly reports, set zones, and allow your drivers to notify you in an emergency with an assist button.

Tracker receives notifications at the same time as you, so our team can act swiftly if they detect any problems that need addressing.



## FEATURES AND BENEFITS

Assist Button	✓
Fleet Logic Access	✓
Theft Retrieval	✓
Email/SMS Notifications	✓
Reports	✓
SMS Service	✓
Zones Management Limited	✓
Early Notifications	✓
Health Check Services	✓
Roaming - On Request	✓
App and Web Access	✓
Optional Impact Detection	✓
Reports Scheduling	✓
Vehicle Grouping	✓
Maintenance Scheduling	✗
Traffic Information	✓
Route Planning	✗
Integration APIs	✗
Share My Journey	✓
Optional Accessories	✗

## TRACKER CONNECT LITE

Everything you need to start tracking your fleet.

Tracker Connect Lite provides you with the essential tools to monitor your vehicles conveniently through online tracking.

This service is perfect for the business with a small fleet.



## FEATURES AND BENEFITS

Assist Button	✗
Fleet Logic Access	✗
Theft Retrieval	✓
Email/SMS Notifications	✓
Reports	✓
SMS Service	✓
Zones Management Limited	✓
Early Notifications	✓
Health Check Services	✓
Roaming - On Request	✓
App and Web Access	✓
Optional Impact Detection	✓
Reports Scheduling	✗
Vehicle Grouping	✗
Maintenance Scheduling	✗
Traffic Information	✓
Route Planning	✗
Integration APIs	✗
Share My Journey	✓
Optional Accessories	✗

## TRACKER MOTORCYCLE

Start tracking your bike or scooter fleet today.

Tracker Motorcycle provides you with the essential tools to monitor the motorcycles in your fleet through 24/7 online tracking.

We give you the optimisation tools to keep costs down and your drivers safe.



## FEATURES AND BENEFITS

Assist Button	✗
Fleet Logic Access	✓
Theft Retrieval	✓
Email/SMS Notifications	✓
Reports	✓
SMS Service	✓
Zones Management Limited	✓
Early Notifications	✓
Health Check Services	✓
Roaming - On Request	✓
App and Web Access	✓
Optional Impact Detection	✓
Reports Scheduling	✗
Vehicle Grouping	✗
Maintenance Scheduling	✗
Traffic Information	✓
Route Planning	✗
Integration APIs	✗
Share My Journey	✓
Optional Accessories	✗

## TRACKER TRAILER LOCATE

The perfect solution to ensure trailer tracking and optimisation. Tracker Trailer Locate gives you the essential tools to monitor your trailers, and all your other vehicles, so your business can run smoothly and efficiently.

You will receive monthly reports, be able to set zones, plus get immediate email or SMS notifications if any anomalies are detected with your trailers, all via your computer or tablet.



## FEATURES AND BENEFITS

Assist Button	✗
Fleet Logic Access	✓
Theft Retrieval	✗
Email/SMS Notifications	✓
Reports	✓
SMS Service	✓
Zones Management Limited	✓
Early Notifications	✗
Health Check Services	✓
Roaming - On Request	✓
App and Web Access	✓
Optional Impact Detection	✗
Reports Scheduling	✓
Vehicle Grouping	✓
Maintenance Scheduling	✗
Traffic Information	✓
Route Planning	✗
Integratipn APIs	✗
Share My Journey	✓
Optional Accessories	✗



## TRACKER TRAILER CONNECT

Monitor your trailers, receive monthly reports and set zones. Receive notifications that immediately highlight any trailer anomalies.

Get all the protection and care of Tracker Trailer Locate, with the added benefit of Theft Retrieval, giving you peace of mind when it comes to protecting your assets and your cargo.



## FEATURES AND BENEFITS

Assist Button	✗
Fleet Logic Access	✓
Theft Retrieval	✓
Email/SMS Notifications	✓
Reports	✓
SMS Service	✓
Zones Management Limited	✓
Early Notifications	✗
Health Check Services	✓
Roaming - On Request	✓
App and Web Access	✓
Optional Impact Detection	✗
Reports Scheduling	✓
Vehicle Grouping	✓
Maintenance Scheduling	✗
Traffic Information	✓
Route Planning	✗
Integration APIs	✗
Share My Journey	✓
Optional Accessories	✗

# DRIVER SAFETY



AT HOME. ON ROADS. IN LIFE.

## TRACKER AI DASHCAM

Help your drivers stay alert on the road.

Tracker AI Dashcam is an artificially intelligent, dual-camera system that keeps drivers safe on the road by detecting fatigue, speeding, recklessness or distractions in real time. It helps your drivers stay alert, aware, and awake on the road, reducing accident risk.

An integrated dual-camera device faces both the road and the driver. Tracker AI Dashcam can recognise event triggers such as speeding, accidents and offers facial recognition to identify a driver, as well as in-cab triggers such as fatigue and distraction.

All information is uploaded to a secure online cloud-based portal, giving you and your drivers real-time alerts, supported by video footage.



## FEATURES AND BENEFITS

### Safe Distance Warning

Embedded safe distance warning for following too close to other vehicles

### Fatigue Detection

Real-time drowsiness detection and alerts

### Facial Recognition

Authorised drivers protocol through embedded facial recognition and driver identification

### Distracted Driving Detection

Real-time distracted driving detection and alerts

### Accident Detection and Recording

View critical footage in real-time with live look-in before and after an event

### Shock Detection and Recording

Stay aware of potential vehicle misuse and damage through detection of unusual forces exerted on the vehicle.

### Covered Camera Detection

Detection and notification to fleet managers when the camera is covered or hindered from recording in-cab footage.

## TRACKER CAREGUARD FOR BUSINESS

When your drivers need it most, make sure there is always somebody by their side with our standalone driver safety service.

Sometimes your drivers need extra support and protection, and they need it quickly.

Tracker CareGuard for Business provides on-demand mobile armed response security and emergency medical assistance at the push of a button via the Tracker CareGuard App.

That means, in the event of any roadside emergency, your drivers will have rapid response by their side, to protect and assist them, and secure your cargo.



## FEATURES AND BENEFITS

### **24/7 Emergency Assistance**

When in need of a first responder, just push the button on the Tracker CareGuard App. The nearest private medical resource will be dispatched to your driver's location. They will then be assessed and either treated at the scene or transported to hospital at no additional cost.

### **Accurate Location**

Get rapid response to your location through accurate pinpoint geo-location.

### **Rapid Armed Response**

Help is only 5 minutes away at the push of a button on the Tracker CareGuard App. Get access to a nationwide response network of over 1 500 armed responders.

### **Access a Nationwide Response Network**

Wherever you are, help is on its way.

### **Convenient and Easy to Use**

Just download the Tracker CareGuard App and when your drivers need us, they simply push the panic button, or place a call to 0860 444 244, giving their location. They will be able to track the progress of the responder assigned via the app.

# **BUSINESS** **OPTIMISATION**



AT HOME. ON ROADS. IN LIFE.

# Tracker Dashboard and Analytics

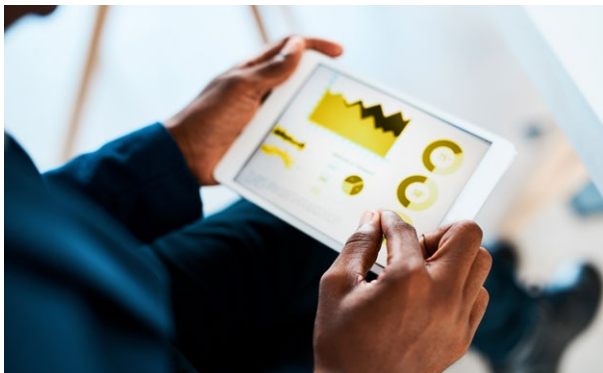
## TRACKER DASHBOARD AND ANALYTICS

**Make real-time business decisions with confidence.**

Tracker Dashboard and Analytics is a powerful fleet management tool, autonomously processing an incredible amount of fleet data and displaying this information in an easy-to-understand visual dashboard format. These visual dashboards track your fleet's performance as it relates to their KPIs, safety, utilisation, behaviour and trips. You have instantaneous access to accurate fleet and driver behaviour reports in an easy-to-read format.

Make informed decisions at a glance.

Meaningful data via Tracker Dashboards and Analytics means a faster, more dynamic, more efficient business.



## FEATURES AND BENEFITS

### **Monitor Your Fleet**

Get a real-time view of your fleet performance and productivity.

### **Visual Dashboards**

Get a holistic overview of fleet performance, categorised in terms of KPIs, safety, utilisation, behaviour and trips.

### **Improve Efficiencies**

Balance vehicle usage across the entire fleet.

### **Reduce Your Workload**

No more time wasted analysing static telematics reports.

### **Safety Statistics**

Access to safety statistics.

# Tracker Fuel Dashboard and Analytics

## TRACKER FUEL DASHBOARD AND ANALYTICS

### Save costs on your fleet's fuel usage.

This is a powerful tool that provides an additional layer of data relating to fuel usage, displayed on visual dashboards.

We collect and analyse data relating to fuel consumption, expenditure and vehicle usage to identify trends, patterns and inefficiencies that can contribute to higher fuel usage such as poor route choices or vehicle maintenance issues. We identify cost savings initiatives that can lower your fuel bill and reduce your carbon footprint. Customisable reports give insight into fuel use, expenditure and impact on operations.

Whether used in the Transportation and Logistics sector to select fuel-efficient routing and highlight lower-cost driving practices, the Manufacturing and Agri sectors to identify potential maintenance issues that could impact fuel consumption, or the Utilities sector around fuel switching and demand-side management programmes, Tracker Fuel Dashboard and Analytics is a business-essential tool for cost-conscious enterprises gearing to unlock further efficiencies in today's competitive landscape.

## FEATURES AND BENEFITS

### Cost Savings

By using data to optimise fuel usage, our solution can help you reduce your fuel consumption and expenditure.

### Improved Efficiencies

Identify inefficiencies in your fuel usage and implement changes to improve your overall operational efficiency.

### Environmental Benefits

Reduce your greenhouse gas emissions by identifying opportunities to reduce fuel consumption.

### Improved Decision-Making

Data-driven insights can inform decision making related to fuel usage and operational management.



## TRACKER BUREAU SERVICES

Efficiency is crucial to your fleet, no matter what size it is.

Tracker Bureau Services support and complement our range of fleet management solutions. They provide you with all the insights and tools you need to optimise the effectiveness and productivity of your fleet when using Tracker's Empower, Connect and Connect Lite products.

TRACKER SMART BUREAU	TRACKER SMART CONTROL ROOM
<p>Tracker Smart Bureau combines Tracker's Smart Fleet Analytics and Smart Bureau functions and provides customers with a comprehensive offsite fleet monitoring and analytics tool.</p>	<p>The Tracker Smart Control Room provides active fleet monitoring that records, monitors and escalates events, while delivering weekly and monthly reports based on any exceptions recorded as well as performance and behavioural trend evaluations.</p>
<p><b>High Risk Events</b></p> <ul style="list-style-type: none"> <li>✓ Main Battery Disconnect</li> <li>✓ Harness Disconnect</li> <li>✓ Tow Notification</li> <li>✓ Border Approach</li> <li>✓ Assist Button</li> <li>✓ Impact Detection (when included)</li> </ul>	<p><b>High Risk Events</b></p> <ul style="list-style-type: none"> <li>✓ Main Battery Disconnect</li> <li>✓ Harness Disconnect</li> <li>✓ Tow Notification</li> <li>✓ Border Approach</li> <li>✓ Assist Button</li> <li>✓ Impact Detection (when included)</li> </ul>
<p><b>Driving Events</b></p> <ul style="list-style-type: none"> <li>✓ Road Over Speed</li> <li>✓ Over Speed (customer-set speed limit)</li> <li>✓ Harsh Braking</li> <li>✓ Excessive Idling</li> <li>✓ Route Deviation (when accompanied by Tracker Empower)</li> <li>✓ Untagged Driver on Ignition (when Driver Tags are fitted)</li> </ul>	<p><b>Driving Events</b></p> <ul style="list-style-type: none"> <li>✓ Road Over Speed</li> <li>✓ Over Speed (customer-set speed limit)</li> <li>✓ Harsh Braking</li> <li>✓ Excessive Idling</li> <li>✓ Route Deviation (when accompanied by Tracker Empower)</li> <li>✓ Untagged Driver on Ignition (when Driver Tags are fitted)</li> </ul>
<p><b>Scheduling Events</b></p> <ul style="list-style-type: none"> <li>✓ Maintenance Schedules (services, tyre, brakes, oil, etc.)</li> </ul>	<p><b>Scheduling Events</b></p> <ul style="list-style-type: none"> <li>✓ Maintenance Schedules (services, tyre, brakes, oil, etc.)</li> </ul>
<p><b>Reporting</b></p> <ul style="list-style-type: none"> <li>✓ Daily Unit Health Check</li> <li>✓ High Risk Trips (trips exceeding customer-set duration)</li> <li>✓ Driver Performance (based on risk factors)</li> <li>✓ Feedback on Open, Closed and Pending Events</li> <li>✓ High Risk Vehicles (based on risk factors and high risk trips)</li> <li>✓ Vehicle Utilisation</li> <li>✓ Total Cost of Operation (when combined with analytics product)</li> <li>✓ Accident Reconstruction Assistance (when included)</li> </ul>	<p><b>Reporting</b></p> <ul style="list-style-type: none"> <li>✓ Daily Unit Health Check</li> <li>✓ High Risk Trips (trips exceeding customer-set duration)</li> <li>✓ Driver Performance (based on risk factors)</li> <li>✓ Feedback on Open, Closed and Pending Events</li> <li>✓ High Risk Vehicles (based on risk factors and high risk trips)</li> <li>✓ Vehicle Utilisation</li> <li>✗ Total Cost of Operation (when combined with analytics product)</li> <li>✓ Accident Reconstruction Assistance (when included)</li> </ul>
<p><b>Analytics</b></p> <ul style="list-style-type: none"> <li>✓ Daily Updated Analytics</li> <li>✓ Overview Dashboard (with a user-configurable analysis period and total fleet cost and distance travelled over the period)</li> <li>✓ Behavioural Index Analysis (per vehicle/driver)</li> <li>✓ Bottom 10 Drivers for the Selected Period</li> <li>✓ High Risk Trips (greater than 2 hours or 200 km, and night-time driving)</li> <li>✓ Breakdown of Number of Driving Events (speeding, harsh braking, harsh steering, etc.)</li> <li>✓ Highlighting Problematic Areas (help reduce high operational costs)</li> <li>✓ Drill Down to Per Vehicle Analysis</li> </ul>	<p><b>Analytics</b></p> <ul style="list-style-type: none"> <li>✗ Daily Updated Analytics</li> <li>✗ Overview Dashboard (with a user-configurable analysis period and total fleet cost and distance travelled over the period)</li> <li>✗ Behavioural Index Analysis (per vehicle/driver)</li> <li>✗ Bottom 10 Drivers for the Selected Period</li> <li>✗ High Risk Trips (greater than 2 hours or 200 km, and night-time driving)</li> <li>✗ Breakdown of Number of Driving Events (speeding, harsh braking, harsh steering, etc.)</li> <li>✗ Highlighting Problematic Areas (help reduce high operational costs)</li> <li>✗ Drill Down to Per Vehicle Analysis</li> </ul>



# VALUE-ADDED SERVICES



AT HOME. ON ROADS. IN LIFE.

## TRACKER RESCUE

**Car theft, hijacking and accidents are stressful and they have an impact on your business.**

Tracker Rescue offers a buffer during this difficult time, so you can focus on getting your business back on track.

Tracker Rescue provides affected businesses with:

- **R3 000 in cash.**
- **A mobile phone and R300 airtime, or R1 000; the choice is yours.**
- **Trauma counselling for nominated occupants of the vehicle.**
- **A three-day car rental with all expenses included.**
- **Your rental car will be delivered to an address of your choice with a full tank of fuel, comprehensive insurance with no excess payable, and all toll fees included.**

If needed, you will also receive a Tracker Emergency Pack which includes:

- **Contact numbers to assist you in blocking stolen bank cards and blacklisting stolen cell phones.**
- **Application forms to apply for identity cards, passports, and drivers' licenses.**

These products are brought to you by Tracker Financial Services (Pty) Ltd., an Authorised Financial Services Provider, FSP license number 42862 and underwritten by Guardrisk Insurance Company Ltd., an Authorised Financial Services Provider, FSP license number 75. Tracker Connect (Pty) Ltd. is a Juristic Representative of Tracker Financial Services (Pty) Ltd.

## FEATURES AND BENEFITS

### **Comprehensive Emergency Pack**

Help with the big stuff and the little stuff when you need it most.

### **Emergency Assistance**

R3 000 cash, a new phone with R300 airtime, a rental car and trauma counselling provided.

### **Peace of Mind When Things Go Wrong**

In the unfortunate event of one of your vehicles being stolen, hijacked or involved in an accident, we've got you covered.



## TRACKER DEVICE PROTECTION

In the case of your device being damaged, Tracker Device Protection has you covered, whether you need it replaced or need your remaining balance paid off.

If the vehicle is a write-off and there is no replacement vehicle, we will pay the full settlement to cancel your Tracker contract. Should you wish to continue with your Tracker subscription, we will pay for the reinstallation of your Tracker device in your replacement vehicle.

## FEATURES AND BENEFITS

### **Protect Your Tracker Device**

In case of damage or theft, we've got you.

### **We'll Pay the Full Settlement**

No excess or call-out fee payable.





Date :

**Want to know more?**

**Call us on  
0860 60 50 40**

**or visit  
[www.tracker.co.za](http://www.tracker.co.za)**



AT HOME. ON ROADS. IN LIFE.